



3 Rural Cottages, Ford, Shrewsbury, SY5 9LG

3 bedroom terraced house—£250,000 Freehold

3 Rural Cottages, Ford, Shrewsbury, SY5 9LG

Coopergreenpooks.co.uk

£250,000 Freehold — 3 bedroom terraced house

sales@cgpooks.co.uk

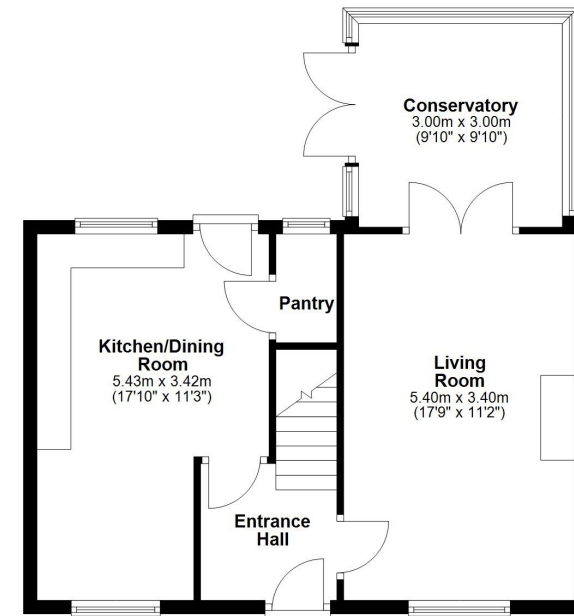
This beautifully presented terraced house offers very well-proportioned and practical accommodation, situated within a fantastic plot with private gardens, detached garage, and driveway parking.

KEY FEATURES

- Lovely entrance hall and staircase to a light and spacious landing with useful storage
- Good sized living room with feature fireplace, wood burning stove and glazed doors onto the conservatory
- Open plan kitchen/dining room with a range of well-fitted units, separate pantry, windows to both elevations and access to the garden
- Two double bedrooms, with the master having built-in wardrobes, a further generous single bedroom and impressive family bathroom with corner shower
- uPVC double glazed windows and oil-fired central heating
- To the rear of the property is an attractively landscaped garden, comprising areas of lawn, paved terrace, planted borders/beds, timber and brick-built stores, and gated access to side
- The extensive gravelled driveway provides plenty of parking for multiple vehicles, as well as access to the detached garage
- A great location with a pleasant outlook to both the front and rear, while being within walking distance of the local primary school and village amenities, and just a 10-minute drive from Shrewsbury town centre
- The property has been improved over recent years, with upgrades including the installation of a new boiler and heating system, re-fitted bathroom, flooring and décor, landscaping of the garden, and general maintenance throughout

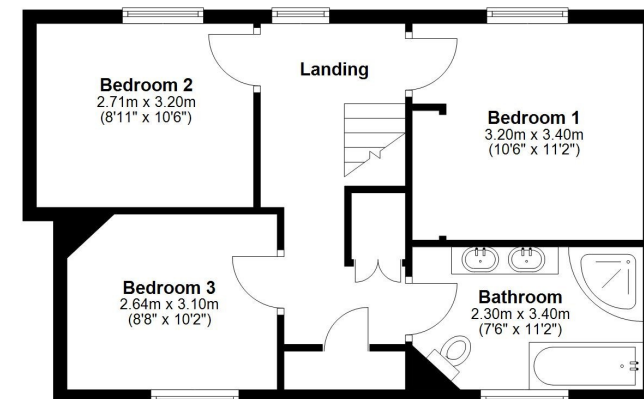
Ground Floor

Approx. 52.1 sq. metres (561.2 sq. feet)



First Floor

Approx. 47.1 sq. metres (507.1 sq. feet)



Total area: approx. 99.3 sq. metres (1068.3 sq. feet)











3 Rural Cottages, Ford, Shrewsbury, SY5 9LG

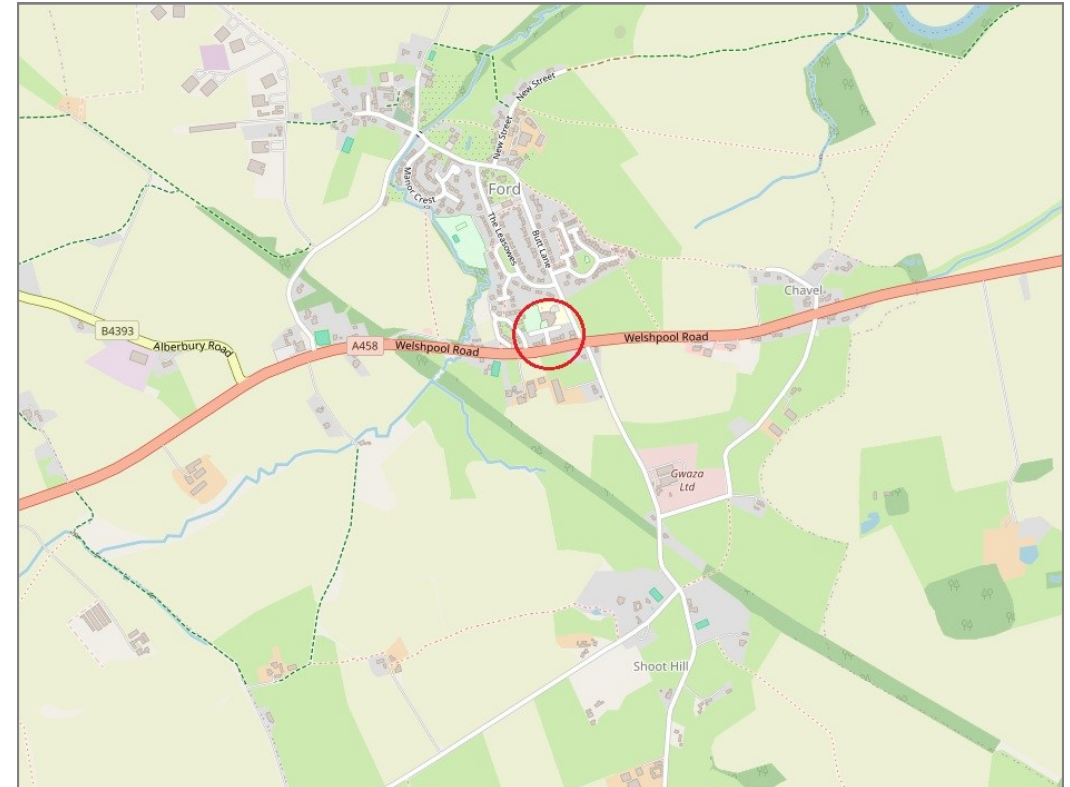
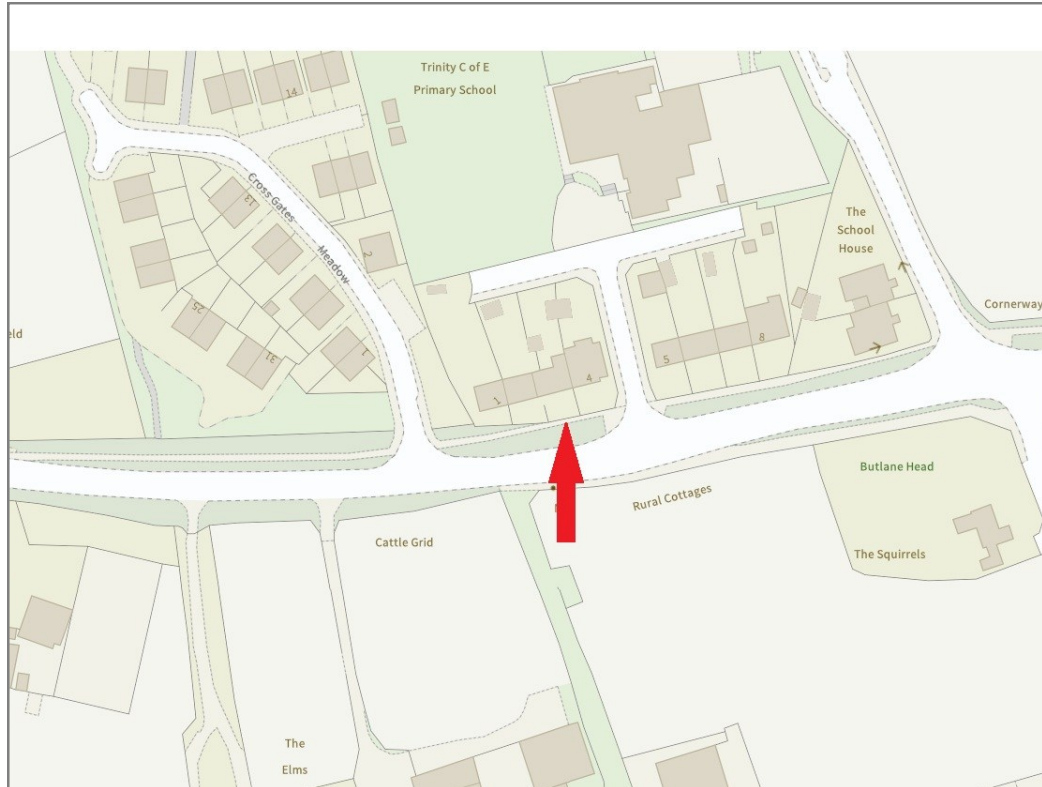
£250,000 Freehold — 3 bedroom terraced house

sales@cgpooks.co.uk

rightmove 

 onTheMarket.com

 **RICS**
Regulated by RICS



BOUNDARIES NOT CONFIRMED

Tenure	Freehold
Local Authority	Shropshire Council
Council Tax	Band B
EPC Band	Band D
Services	Mains water, electricity and drainage are connected. Oil central heating.

 **Expert mortgage advice available**

3 Barker St, Shrewsbury SY1 1QF

Cooper Green Pooks
01743 276666



Your home may be repossessed if you do not keep up repayments on your mortgage.

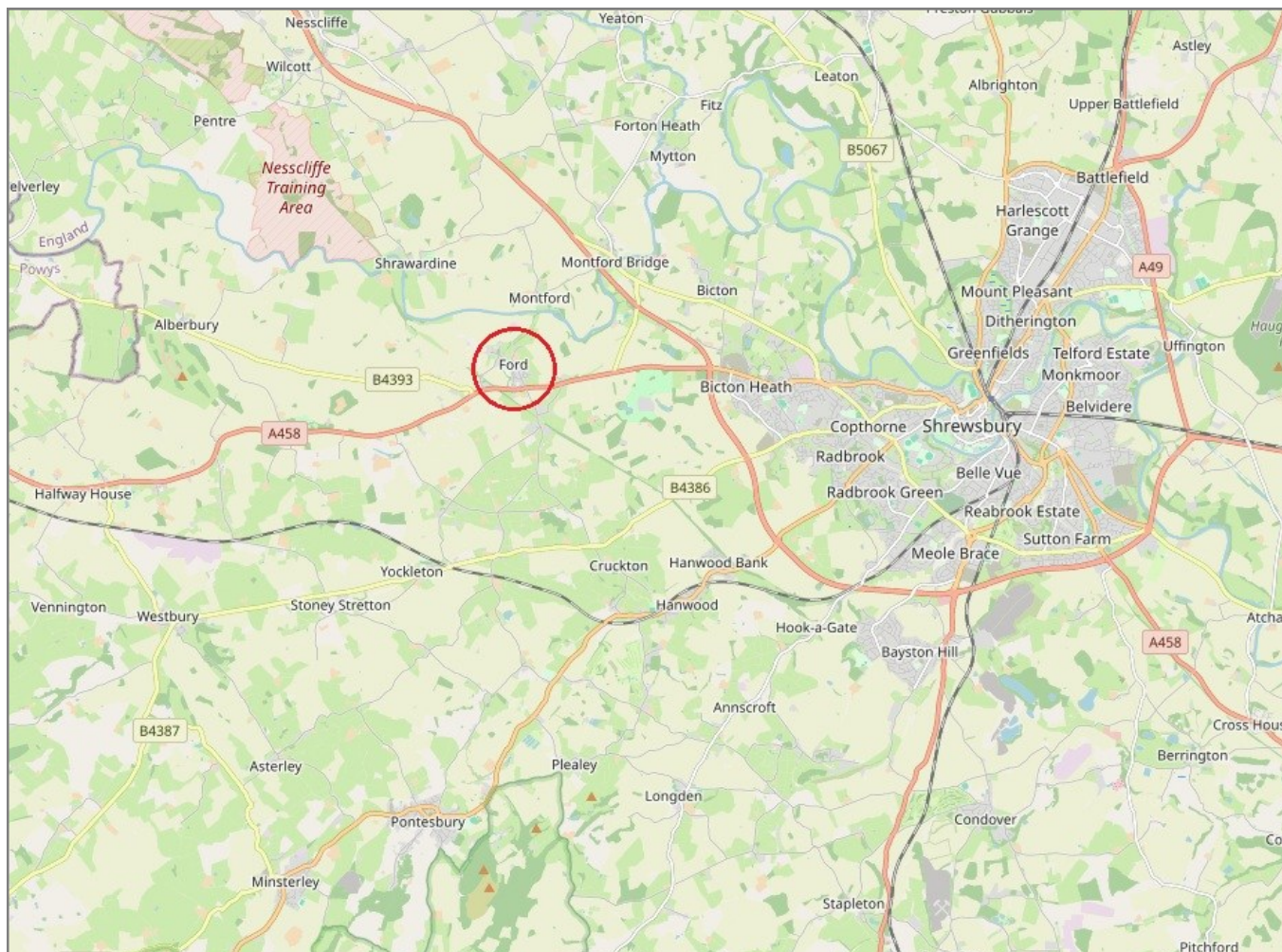
There may be a fee for mortgage advice. The actual amount you pay will depend upon your circumstances. The fee is up to 1% but a typical fee is 0.3% of the amount borrowed.

3 Rural Cottages, Ford, Shrewsbury, SY5 9LG

Coopergreenpooks.co.uk

£250,000 Freehold — 3 bedroom terrace house

sales@cgpooks.co.uk



IMPORTANT NOTICE: Cooper Green Pooks for themselves and for the lessors or vendors of this property whose agents they are give notice that: 1 No appliances, services or service installations have been tested and no warranty as to suitability or serviceability is implied. Any prospective purchaser or lessee is advised to obtain verification from their surveyor or solicitor. 2. The particulars are set out as a general outline only for the guidance of the intended purchasers or lessees and do not constitute, nor constitute part of, an offer or contract. 3. All descriptions, reference to condition and necessary permissions for use and occupation and other details are given in good faith and are believed to be correct but any intending purchasers or lessees should not rely on them as statements or representation of fact but satisfy themselves by inspection or otherwise as to the correctness of each of them. 4. No person in the employment of Cooper Green Pooks has any authority to make or give any representation or warranty whatsoever in relation to this property. 5. All rentals and prices are quoted exclusive of Stamp Duty, legal and surveyors fees and any other associated purchasers or lessees costs. 6. Floor plans are indicative only and should not be relied on. 7. The plan showing the boundary of the property is indicative only and has not been checked against the legal title so should not be relied on. 8. All dimensions, floor areas and site areas are only approximate and should not be relied on. Dimensions are generally maximum room dimension.